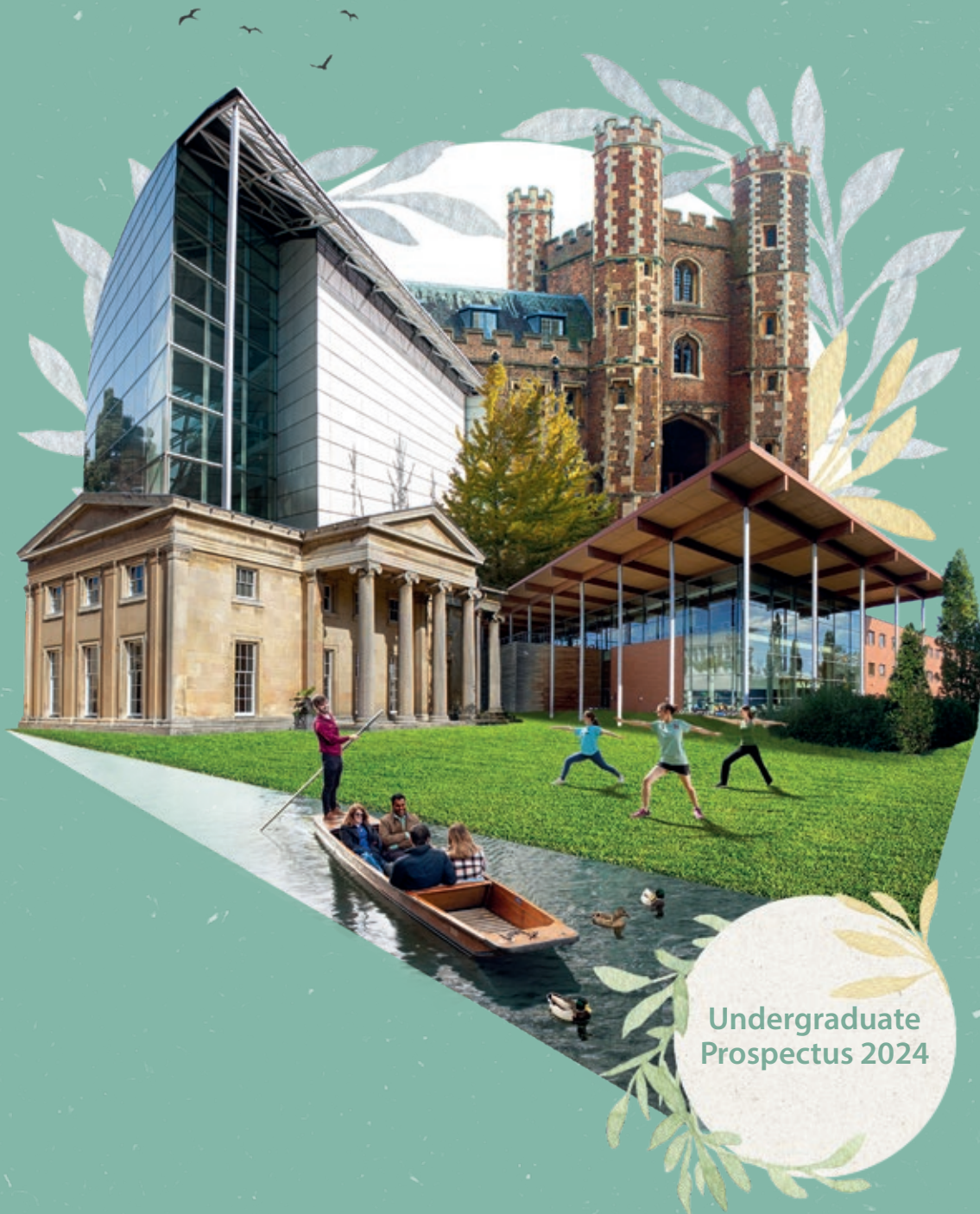




UNIVERSITY OF
CAMBRIDGE



Undergraduate
Prospectus 2024

Zaynab (left) with the Cambridge SU team.



Welcome to Cambridge

"Studying at Cambridge was one of the best experiences of my life. I got to learn from leading academics, meet students from all walks of life, and live in a beautiful city. The University's small-group supervision system meant that I was able to study and engage with my subject in an exciting and interactive way, from both my teachers and my peers.

Cambridge also has an incredible student community. Students are so enthusiastic about their subjects, but they also spend a lot of time getting involved with extra-curricular activities, and they have such a clear vision of how they want to change the world. Cambridge is an amazing university, so I really hope you love the look of it and want to apply just as much as I did!"

Zaynab Ahmed

Cambridge SU (Undergraduate President)

Find out more about Cambridge Students' Union on p16.

Take a Virtual Tour of Cambridge



Visit our Virtual Tour to access information about the University and to hear directly from our staff and students. Find out more on p156 and visit

 www.virtualtour.study.cam.ac.uk

 www.undergraduate.study.cam.ac.uk

 [@cambridge.university](https://www.facebook.com/cambridge.university)

 [@Cambridge_Uni](https://twitter.com/Cambridge_Uni)

 [@cambridgeuniversity](https://www.instagram.com/cambridgeuniversity)

 www.youtube.com/CambridgeUniversity

Welcome

Why Cambridge?	2
Applying to Cambridge	4
Teaching and Learning	12
Student Life	16
Accommodation	24
Support	26
Money	32
Careers	36
Mature Students	38
International Students	40

In this Prospectus

Courses

Courses	42
Foundation Year	44
Anglo-Saxon, Norse, and Celtic	46
Archaeology	48
Architecture	50
Asian and Middle Eastern Studies	53
Chemical Engineering and Biotechnology	56
Classics	58
Computer Science	60
Design	62
Economics	64
Education	66
Engineering	69
English	72
Geography	74
History	76
History and Modern Languages	78
History and Politics	79
History of Art	80
Human, Social, and Political Sciences	82
Land Economy	84
Law	86
Linguistics	88
Mathematics (including Mathematics with Physics)	90
Medicine (including Graduate course)	92
Modern and Medieval Languages	97

Music	100
Natural Sciences	103
Philosophy	106
Psychological and Behavioural Sciences	108
Theology, Religion, and Philosophy of Religion	110
Veterinary Medicine	112
Management Studies (final year only)	116
Manufacturing Engineering (final years only)	117

Colleges

Choosing a College	118
Cambridge Colleges at a Glance	120
The Colleges A-Z	122

Details

Entrance Requirements	152
Finding Out More	155
Open Days and Events	156
Map	158
Index	160
About this Prospectus	163
Cambridge Terminology	164

Why Cambridge?

Cambridge is one of the best universities in the world.

Home to over **25,000 students** from more than **140 countries**, we offer undergraduate degree courses in the arts and humanities, social sciences, sciences and engineering.

"I think studying at Cambridge is such an asset, both personally and professionally. The reputation of the University will stay with you throughout your career. The teaching is first class – getting three to one weekly teaching in supervisions is unparalleled!"

Jonathon
Ballymena

+ Excellent teaching

Top 3

in the *Complete University Guide* 2023.

Top 3

in the *Guardian University Guide* 2023.

Top 5

in the 2022 Academic Ranking of World Universities.

+ World class research

Top 3

for research quality (*Complete University Guide* 2023).

121 affiliates

of the University have been awarded the **Nobel Prize** since 1904.



A place to call home

3 years

Cambridge guarantees almost all students College-owned accommodation for at least three years (p24-5).

Support

to help you settle in and more than 700 clubs and societies to get involved with.

+ Great prospects

92%

of our students who responded to the Graduate Outcomes Survey were in work or further study within 15 months of graduating (find out more on p36).

Top 10

Cambridge is one of the top ten universities most often targeted by Britain's leading graduate employers (*The Graduate Market in 2022*).



"The collegiate system allows you to interact with people from a range of subjects and everyone is so passionate about what they do, which leads to lots of interesting discussions."

Antonina
Gliwice, Poland

Cambridge: a collegiate university

What does that mean for you?

Cambridge is a 'collegiate' university. It's made up of faculties and departments in different academic subjects and 31 Colleges (29 of these accept applications for undergraduate study). Our students become part of their College community, giving them a sense of belonging that lasts long after they graduate.

The University

(through its faculties/departments):

- determines course content
- organises lectures, seminars, practicals and projects
- sets and marks examinations
- awards degrees

The Colleges:

- admit undergraduate students
- organise small-group teaching (supervisions)
- are the place where you'll live, offering accommodation, and places to eat, socialise and meet new people
- are there to provide pastoral and academic support when you need it



"My years here have been the best of my life. I have improved both academically and personally, meeting fantastic friends and learning a subject that I adore. I would not trade this experience for the world."

Charlotte
Caerwedros, Wales

Applying to Cambridge

The Cambridge application process is slightly different to other universities. You still need to apply through UCAS, however, at Cambridge the process starts earlier to give us time to collect and consider all of the application information.

The steps below and the following pages will guide you through the process.

1 Choose a course

You're going to be studying to a very high level for several years, so, make sure you choose a course you're personally interested in and will really enjoy studying! See p42-117 for course information.

 www.cam.ac.uk/courses

2 Decide on your College

Where would you like to live when you're here? In your UCAS application, you can apply directly to one of our 29 Colleges or make an open application. Find out more on p118-50.

 www.cam.ac.uk/ugcolls

3 Check assessment requirements

Most applicants are required to take a written assessment. For some assessments you'll need to ensure you are registered in advance via an authorised assessment centre, whereas for others this will be organised by your chosen Cambridge College if you're shortlisted for interview (see p8).

Please check the type of assessment required for your course as early as possible, as some assessments may require you to be registered several weeks before the UCAS application deadline. You can find more information about admissions assessments on the course pages of our website.

 www.cam.ac.uk/assessment

4 Submit your application

Submit your UCAS application online by 16 October – our institution code is **CAM C05**. Earlier or later deadlines may apply (see opposite). You'll find more information about the application process, including additional items you'll need to provide, on the next few pages.

 www.cam.ac.uk/apply

5 Interviews

Everyone with a reasonable chance of being offered a place is invited to attend an interview (see p8).

If you decide to apply, you can find videos and full information about interviews on our website.

 www.cam.ac.uk/interviews

6 Our decision

We'll advise you of our decision before the end of January. See p10.

Remember to check our website for all relevant application deadlines – our UCAS application deadline is 16 October, but other deadlines apply in certain circumstances (see 'a few essentials' opposite).

A few essentials

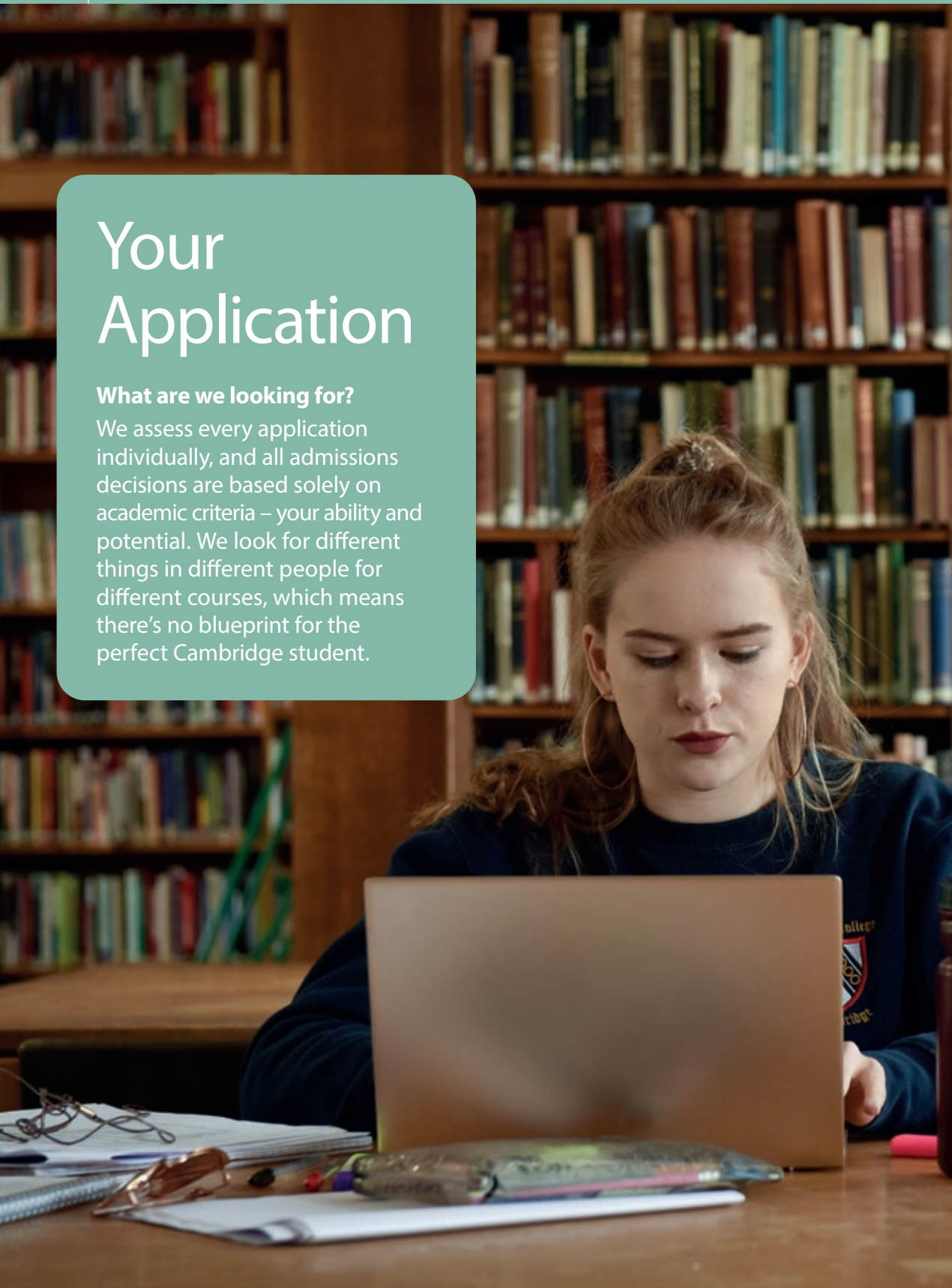
- You can't apply to both the Universities of Cambridge and Oxford in the same year.
- After you've submitted your UCAS application, you will need to fill in an additional Cambridge-specific application form called 'My Cambridge Application', which we'll send you a link to by email. If we need any further information from you, we'll contact you by email, so you should regularly check the account you provide on your application (including your spam/junk folders). Find out more on our website: www.cam.ac.uk/apply.
- In some cases, different application deadlines might apply. Mature applicants, applicants to the Foundation Year Course and Organ Scholarship applicants should check the relevant pages of this Prospectus and associated webpages for more information (Mature Students: p38, www.cam.ac.uk/mature; Foundation Year: p44, www.cam.ac.uk/foundationyear; Organ Scholarships: p19, www.cam.ac.uk/musicawards).



Your Application

What are we looking for?

We assess every application individually, and all admissions decisions are based solely on academic criteria – your ability and potential. We look for different things in different people for different courses, which means there's no blueprint for the perfect Cambridge student.





There are elements our Admissions Tutors look for in every application.

Academic ability and potential

We're looking for students with the academic ability and potential to thrive at the University. Therefore, you should be aiming for excellent examination grades. Typical A Level/IB offers and subject requirements are outlined on our course pages (p44-117) and guidance on a range of other qualifications can be found on p153-4.

An ability to think critically and independently

We're looking for an indication of your willingness to think logically while keeping your mind open to new ideas. You also need self-discipline, motivation, commitment, and the desire and potential to go beyond what you've learned so far. See also p12.

Check our website for advice about how to choose the most appropriate subjects and subject combinations at A Level.



www.cam.ac.uk/post-16-subject-choices

What work experience do I need to have?

Work experience isn't required. However, for Medicine and Veterinary Medicine, having some relevant work experience is recommended.

Check the course pages (p44-117) for more information about which courses recommend work experience.

Suitability and enthusiasm for your course

Finally, we're looking for students who really want to learn about the subject they've applied for. While the degree you will receive at the end is important, you should think carefully about your options: which courses and subject areas will inspire your curiosity and commitment?

If you think you have these qualities, we're looking for students like you and hope you'll apply to join us at Cambridge.

Should I refer to extra-curricular activities in my personal statement?

Our admissions decisions are based on academic criteria (ability and potential) and we expect to see evidence in your application of your wider engagement with areas of academic interest, such as reading and other explorations relevant to the course for which you have applied. Extra-curricular activities which are of no relevance to the course will not increase your chances of receiving an offer.

If, however, particular extra-curricular activities have enabled you to develop transferable skills, such as organisation or time management, then do include them in your personal statement. Such activities might include significant caring responsibilities or paid employment, which can help us fully contextualise your application, as well as sport, physical activity, music, drama and volunteering.





Watch our applying video

www.cam.ac.uk/apply

After your UCAS application

Following the submission of your UCAS application, there are several more elements to the application process at Cambridge, including additional forms, admissions assessments and interviews.

Additional forms

After submitting your UCAS application, we'll send you a link to an additional application form by email, known as 'My Cambridge Application'. This collects information that isn't on the UCAS application but which we find useful when assessing your application to Cambridge. You'll also have the opportunity to complete an optional Cambridge-specific personal statement. You can find out more on our website: www.cam.ac.uk/apply. If you're applying to the Graduate Course in Medicine (p95), you'll complete a form specific to that course. Organ Scholarship applicants (www.cam.ac.uk/musicawards), will need to complete their UCAS application, the My Cambridge Application form and an Organ Scholarship application.

Admission assessments

Most applicants are required to take a subject-specific written admission assessment.

When you take these assessments and how you are registered for them depends on your chosen course. These assessments are designed to supplement the information in your application and to assess skills, such as writing and language skills, and levels of knowledge and understanding relevant to your course. You can find examples of past papers on the course pages of our website (www.cam.ac.uk/courses).

- **Written assessments: pre-registration required** – these are usually taken in October or November, with the exception of the LNAT for Law which usually takes place in September. For all pre-registration assessments you must be registered at a centre local to you in advance - you can find dates and details on our website. Please note, if you are not registered for any necessary assessment by the relevant deadline, your application to the University will not be valid.
- **Written assessments: Cambridge College registered** – these are normally taken shortly before your interview, if you are invited to attend one. You do not need to register in advance and your College will provide details of the assessment with your interview information.

For more information about these assessments, see p43, our course pages (p44-117) and the website (www.cam.ac.uk/assessment).

Can I take a gap year?

Around six per cent of students accepted to Cambridge take a gap year. You should state your intention to defer entry in your UCAS application and be prepared to talk about your proposed year out if interviewed. Please also refer to the specific course pages if you're considering applying for Engineering (p69), Mathematics (p90) or the Graduate Course in Medicine (p95).

The interview

Everyone with a reasonable chance of being offered a place is invited to attend an interview, so it's a sensible idea to be aware of what might happen during your interview so you can be fully prepared.

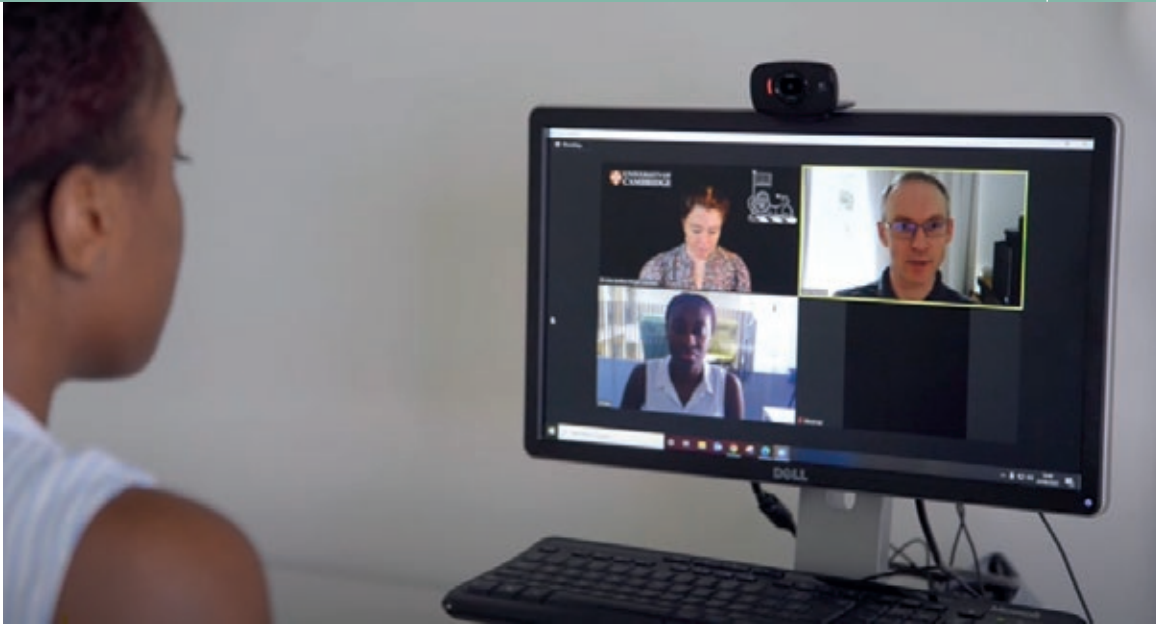
Interviews help our Admissions Tutors to get to know you and your motivations for applying to Cambridge; they contribute to our assessment of your academic potential and suitability for your chosen course, while giving you the opportunity to expand on the written elements of your application.

What do interviews involve?

The form and length of interviews varies from subject to subject and from College to College. You'll have one, two or three interviews (most commonly two), normally making a total of 35-50 minutes of interview time.

Your interview may be conducted in-person or online, depending on the College and particular circumstances – for more details, visit our website (www.cam.ac.uk/interviews).

If you're applying for a course which requires you to take a Cambridge College-registered written assessment, you will normally sit this around the same time as your interview. Assessment details will be included in the information your College sends you inviting you to interview.



How should I prepare?

There aren't any special tricks to preparing for interviews, however there are some things you can do beforehand which will, at the very least, make you feel more confident.

- Watch our interview films to give you an idea of what to expect on the day.
- Re-read your personal statement and any written work.
- Read around your subject and think about any particular topics you'd like to talk about.
- Practise talking and answering questions about your subject and wider academic interests with your friends, family and/or teachers.

For more tips, advice and interview films, visit our website (www.cam.ac.uk/interviews).

Probably the most important tips are to be on time, be as relaxed as possible, and, above all, be yourself!

I go to a state/private school – will this disadvantage my application?

No. The University and its Colleges are committed to offering admission to students of the highest intellectual ability and potential, regardless of background (www.cam.ac.uk/admissionspolicy), and we don't discriminate for or against applicants because of the type of school they attend.

How do we assess applications?

There's no blueprint for an ideal Cambridge student and we want to give applicants as many opportunities as possible to demonstrate their strengths and potential. Therefore, each application is considered individually and holistically, using all of the following information:

- academic record
- school/college reference
- personal statement
- any written work submitted
- performance in any written assessment
- contextual data
- performance at interview



Further information
www.cam.ac.uk/apply

What's the most important part of my application?

Admissions Tutors consider all of the information available together before making any decisions. While the most recent academic performance carries the greatest weight, the relative importance of each element of the application varies because each student is different. No part of an application is considered in isolation; for example, a student's performance at interview alone doesn't determine the outcome of their application.



Our decision

All undergraduate admissions decisions are the responsibility of the Cambridge Colleges.

Following the assessment of your application, there are two possible outcomes.

1

You're made an offer.

This might be from the College you applied/were allocated to, or from a different College as a result of your application being 'pooled' (see right). An offer may be unconditional, or conditional and dependent on achieving certain grades in the qualifications you're taking (the University makes unconditional offers only to those who have already met the conditions for entry to their chosen course).

2

Your application is unsuccessful.

With around six applications per place, every year we aren't able to make offers to many students with good grade predictions. Don't let the prospect of not getting a place put you off applying. We can't offer you a place if you don't apply to us!

Does the University take part in Clearing?

The University doesn't enter Clearing. However, we may have places available for some widening participation applicants during our August Reconsideration Pool. You can find more information at www.cam.ac.uk/august-reconsideration.

The pools

The 'winter pool' is designed to ensure that the best applicants who could not be accepted by their original College are offered places – Colleges would rather admit a strong applicant from the pool than a weaker applicant who applied directly/was allocated to them.

Although impressed by your application, your College may not have a place for you and so may pool your application for other Colleges to consider.

A few pooled applicants may be asked to attend another interview in early January. When all pooled applications have been reviewed, you may be offered a place by a different College. If no College can offer you a place, your original College will advise you of this decision by the end of January.

For 2022 entry, 750 pooled applicants were made an offer of a place by a different College from the one they applied/were allocated to.

A second smaller pool (of offer holders who narrowly miss the conditions of their original offer and some widening participation applicants – see August Reconsideration Pool, left) takes place in August after examination results are released and places can be confirmed. This again helps to ensure that the best applicants secure places.

Visit www.cam.ac.uk/apply for more details about the application process and to watch our explainer video.

Applying from outside the UK?

If you're applying from outside the UK, please see p40 and www.cam.ac.uk/uginternational for more information on the application process and www.undergraduate.study.cam.ac.uk/international/fee-status for information on eligibility for Home fee status.





"You should definitely apply – you might even enjoy your interview! Ignore the stereotypes – if you think you would enjoy studying here then you should apply."

Sarah
Guisborough



Extenuating circumstances

If you have experienced health or personal problems, disability or difficulties with your schooling, your school or college referee (or GP or social worker) should let us know by completing our Extenuating Circumstances Form. The deadline for completing this form can be found on our website (below).

The information provided on the form gives context against which Admissions Tutors can consider your academic record and, if appropriate, your performance at interview.

The sort of extenuating circumstances that this form should be used to advise us of include:

- a serious, acute or chronic medical condition (especially since the age of 14)
- significant caring responsibilities, recent bereavement or serious illness within close family
- any kind of disruption due to adverse family circumstances
- serious disruption due to educational provision at school/college
- other circumstances where disruption has occurred

You can find the form and more details about extenuating circumstances online. If you or your referee wish to discuss your particular situation, please contact a College admissions office for advice as early as possible.



Further information

[www.cam.ac.uk/
extenuating-circumstances](http://www.cam.ac.uk/extenuating-circumstances)

Teaching and Learning

Cambridge is known and respected across the globe for the excellence of our teaching and research, and the quality of our graduates. You'll be taught by inspiring academics who are experts in their field, and our supervision system means you'll receive personal tuition and support.

+ **Top 10**
in the world for academic reputation
(*QS World University Rankings 2023*).

+ **Top 10**
in the world for teaching (*THE World University Rankings 2022*).

+ **Supervisions**
provide regular small-group
tuition with subject specialists.



Watch our supervisions video
www.cam.ac.uk/supervisions



"There is such amazing teaching quality in both lectures and supervisions that you really do learn your course at an incredibly high level and can push well beyond the fundamentals and into the detail of the things you're interested in."

Daniel
London

How you're taught

Our University faculties and departments arrange lectures, seminars and practicals that students from all Colleges attend together. Most of your teaching will take place in-person. In other cases, where there are good reasons to do so, a blend of in-person and online teaching is delivered. At Cambridge, you'll also attend supervisions, a system of personal tuition that is one of our greatest strengths. Your College arranges supervisions for you.

You must ordinarily be available to study in Cambridge for the full duration of your course (with the exception of a year abroad, where part of your course). You can find expected term dates on our website: www.cam.ac.uk/about-the-university/term-dates-and-calendars.

As the terms are short, the pace and volume of work is likely to be greater than you're currently used to and there's much greater emphasis on independent and self-directed study here compared to school or college.

During term time, you're expected to spend an average of 42-46 hours a week on your academic studies (including teaching/contact time and independent study), and you also need to undertake some work, such as further reading or research, revision or assignments, during the vacations.

Every student adjusts to this new workload in their own way and time, and there are plenty of people who can offer advice and support while you get settled in and throughout your degree (see p26-31).

Teaching methods

Lectures

Lectures act as a starting point for your own research and typically last around 50 minutes. Depending on the subject, anywhere up to several hundred students may attend. Many lecturers are leading academics working at the forefront of their field, so lectures are a fantastic opportunity to find out about the latest research.

Seminars and classes

These are usually for medium-sized groups (eg 10-30 students), last between one and two hours, and provide the opportunity to discuss particular topics in more detail. They're led by academic staff but you're expected to contribute actively.

Practicals

Sometimes called 'labs' or laboratory classes. Practical work on some courses may be assessed.

Supervisions

Small-group sessions most often for between one and three students, supervisions provide the opportunity to explore your subject more deeply, discuss your own work and ideas, and receive regular feedback. As they aren't assessed, supervisions are the ideal environment for you to test your ideas and interests, while encouraging you to develop your thinking.

The number of supervisions you have each week varies from course to course, and you do preparation for each one – usually reading, writing an essay or working on some problems. Supervisors are specialists in particular subjects (they may be one of the country's or the world's leading authorities) and throughout your course, your supervisors will change depending on what you are studying at the time.

Field trips, study visits, language courses, study abroad

Several courses include opportunities to go on field trips, study visits or language courses, or to study abroad through exchange programmes. Naturally, where you go, how long for and what you do varies depending on your course. The faculties, departments and Colleges often have funds available to help you go on trips in Britain and abroad.

Independent research

A chance to carry out your own research, test out theories and put forward your own ideas. Your work might even get published while you're still an undergraduate.

Work experience

Some courses include a period of work experience, giving you a chance to explore potential career paths, develop your employability skills and create networks that could lead to job opportunities after you graduate.

Refer to the individual course outlines (p44-117) and faculty/department websites for more details about teaching.



Further information
www.cam.ac.uk/courses



Facilities and Resources

We admit the most academically able and motivated students and provide them with inspiring, world class teaching. We're confident that we also offer the best resources and facilities to support their learning.

Libraries

You certainly won't be short of libraries at Cambridge – the collegiate University has more than 100! Libraries provide study spaces, resources and staff to help you find what you need for your studies.

- College libraries contain standard course texts and other related materials, as well as some specialist collections.
- Faculty and department libraries offer more specialised subject collections and can signpost you to subject-specific electronic resources, including journals, ebooks and databases.
- The University Library (or UL) is a legal deposit library holding more than eight million books, journals and other documents ranging in age from ancient manuscripts to a vast range of electronic resources available for you to access from anywhere.

To ensure you get the most from the University's libraries, the UL and many of the College, faculty and department libraries offer practical sessions and one-to-one help. These include introductory tours, sessions to highlight the resources available for particular disciplines and information skills classes.

The CamGuides pre-arrival resource introduces you to some of the academic, research and digital practices in which Cambridge students engage:

www.camguides.lib.cam.ac.uk



Further information
www.libraries.cam.ac.uk



Computing and IT

University Information Services (UIS) works in partnership with your College and department to provide for all your computing needs while you are at Cambridge.

UIS offers all students comprehensive IT support, including:

- eduroam wi-fi provision throughout the University and most Colleges
- free email accounts and file storage
- free software, including Microsoft 365 and Trellix antivirus protection
- free IT training courses
- a service desk.



help.uis.cam.ac.uk

Language Centre

The Language Centre provides language-learning opportunities to all students wishing to take up or continue a language. Our Language Programme (CULP) offers taught courses at various levels in a number of languages. We also run a popular conversation exchange scheme with native speakers, and conversation sessions for students to maintain their spoken ability.

Our range of static and interactive resources includes books, CDs, foreign films and online programmes. In addition, the John Trim Centre houses self-study resources in more than 180 languages (including English) and a dedicated Advising Team is on hand to help.



www.langcen.cam.ac.uk



Museums and collections

Cambridge has nine specialist museums and collections, all of which are open to students and the public. The fascinating exhibits range from dinosaurs to modern art, and rock samples to Rembrandt. Even if none relates directly to your course, a look at the whale skeletons, classical sculpture or even the camera used by Robert Falcon Scott at the South Pole in 1912 has to add something to your time at Cambridge!

Highlights from our museums and collections include:

- Snow goggles used by Ernest Shackleton
- 140 million year old fossil ferns
- Samurai armour complete with a moustache made of boar's bristles
- Rembrandt, Titian and Monet at the Fitzwilliam Museum
- Modern and contemporary art at Kettle's Yard
- Charles Darwin's microscope
- 21 metre fin whale skeleton



www.cam.ac.uk/museums

Facilities for worship, celebration and meditation

There are religion-specific places of worship in and around Cambridge for those following the Buddhist, Christian, Hindu, Jewish, Muslim and Sikh faiths, and many Colleges have chapels and designated spaces for prayer and reflection by students of all faiths or none.

A number of rooms are also made available by the University for its students, staff and authorised visitors with the primary purpose of providing a safe, clean and inclusive place for worship, celebration or meditation.



www.studentwellbeing.admin.cam.ac.uk

Course-specific facilities and resources

Our course-specific facilities range from laboratories and surgical suites to concert halls and theatres. You can find out more about the facilities and resources that support learning at Cambridge on our course pages (p44-117).





Student Life

Cambridge is a great place to be a student. There's loads going on within the University and Colleges, and there are also over 700 student clubs that you can join – a great opportunity to meet like-minded people or to try something new.

Cambridge Students' Union (Cambridge SU)

Cambridge SU exists to increase the power of the Cambridge student community to deliver positive change whilst also enhancing the students' experience. It provides high-quality tools, skills, strategies, knowledge, and development opportunities for students to shape their education and experiences.





The SU is led by a team of eight elected sabbatical officers who campaign and lobby for change across the collegiate University to improve the student experience. Cambridge SU:

- represents student interests on University committees
- campaigns on students' priorities, such as mental health provision, structural disadvantages faced by marginalised groups, education policy and climate action
- supports and connects College student unions (usually called JCRs and MCRs) through training, forums and advice
- runs the professionally-staffed Student Advice Service
- manages projects like the Shadowing Scheme for prospective students (see p157)

The SU is proactive in building student communities and our seven SU campaigns; BME, Class Act, Disabled Students, Ethical Affairs, International Students, LGBT+, and Women's Campaign, are active and vibrant groups that help connect students with similar interests and backgrounds through events and campaigning.

Every College also has its own students' union, to which undergraduates are elected to represent students at a College level. So, if you want to have a say in student affairs, consider running for election!



Further information
www.cambridgesu.co.uk

Student societies

Your time at Cambridge isn't just about academic work – Cambridge will be your home for the duration of your course and it's important that you have time out from your studies to get involved in the opportunities the University and city have to offer. At Cambridge, you can do almost anything at almost any level, from 'having a go' to semi-professional. Extra-curricular activities can provide some of the most meaningful experiences you have at University and might even be a springboard for careers or be part of life beyond university too.

Community and charity

There are lots of opportunities for Cambridge students to get involved in community projects, campaigns and charity work. Many national and international charities have student society branches in the University, from Amnesty International to Student Minds, and there are also student groups who work closely with local charities and community organisations.

Drama

Cambridge is renowned for its student-produced drama and famous acting alumni, from Emma Thompson to Richard Ayoade. From the cutting-edge comedy of the Cambridge Footlights to classical plays, popular musicals and original productions, there's something for everyone.

Auditions are often open to all and there are opportunities to direct, produce, and get involved with set design, lighting, sound, stage management, costume, make-up and front of house, even if you've never done it before.

There are excellent performing arts facilities around Cambridge. In addition to the University's ADC Theatre, a number of Colleges have their own purpose-built performance spaces and several major productions take place in the city's Corn Exchange and Arts Theatre.



Media

If you'd like to try your hand at journalism, there are various student newspapers and other publications to get involved with, including *Varsity*, *The Cambridge Student* and *The Tab*. As well as CU-TV and the University's radio station, Cam FM (presented by University members and offering training in many aspects of radio), there are other student groups focused on photography and film-making.

Politics

Cambridge is politically diverse and engaged, so it's a great place for students to debate local, national and international issues or get involved in student campaigns within the University.

There are numerous political clubs, representing different political parties and many other political societies which host high profile speakers and organise panel discussions on contemporary topics.

There are also lots of student campaign groups which campaign on important political issues, both within the University and at a national level, including Cambridge Defend Education and Cambridge Climate Justice.

Other interests?

As well as those already mentioned there are societies relating to religious and cultural groups, dance, food and drink, games and hobbies, and a range of academic subjects.

The Societies Directory on the Cambridge SU website has a list of all the societies within the University. There are also lots of clubs and societies within the different Colleges. If there isn't a group or society for your particular passion or interest at the moment, you could start one – all you have to do is find a few like-minded people.



Further information

www.cambridgesu.co.uk/opportunities/societies





Music

There's an enormous range of music societies and student bands, for any style and level of experience. Many Colleges run open mic nights and numerous bands, choirs and orchestras regularly record and tour nationally and internationally.

The Faculty of Music offers masterclasses and workshops, and has an extensive collection of instruments that can be used by students (some instruments may be available to hire).

Music groups include:

- a capella groups
- Baroque Ensemble
- Brass Band Society
- Ceilidh Band
- Chamber Orchestra
- Concert Band
- Hip Hop Society
- Jazz Orchestra
- Mixtape Society
- Opera Society
- Rock Society
- Show Choir
- String Ensemble
- Symphony Orchestra

To find out more, see Cambridge SU's online Societies Directory (opposite), the Faculty of Music website (www.mus.cam.ac.uk) and individual College websites. Information about music in the city can be found on p23.

"I've really enjoyed the extra curriculars, particularly rowing – our College boat club has a really wonderful supportive atmosphere that can only be forged by suffering through morning outings together!"

I also take part in the Ceilidh Band, where I play the accordion at rehearsals, sessions, and occasionally at gigs too!"

**Stella
Chester**

Music awards

Are you an organist or instrumentalist of a high standard, or do you like to sing? If so, you may like to consider our music awards. The awards vary, but all include a small bursary and professional coaching and/or music lessons. Visit our website for more information about the awards available for students joining the University in 2024.



Further information

www.cam.ac.uk/musicawards



Sport

Cambridge offers a diverse range of competitive and recreational sporting opportunities to help you lead a healthy and active lifestyle alongside your academic studies. Whether you want to continue playing a sport you love or try something new, we have more than 80 sports clubs and societies, and the University and Colleges offer a variety of facilities and support services for everyone from beginners to elite athletes.

Among our 80 sports clubs and societies, you will find:

- Australian Rules Football
- Basketball
- Cheerleading
- Dancesport
- Football
- Handball
- Ice Hockey
- Judo
- Lacrosse
- Netball
- Orienteering
- Rowing
- Rugby Union
- Squash
- Table Tennis
- Taekwondo
- Ultimate Frisbee
- Volleyball

And much more!

"I take part in plenty of sports which provide the perfect offset to work life. At College level, I'm the mixed lacrosse captain (a sport I didn't know existed before I came here!), and at a University level I'm a member of the cross country club, even taking part in a race against Oxford, the highlight of my time here so far."

David
Portsmouth



Sport for everyone

Regardless of which sport you want to play, there are plenty of ways to get involved, with many Cambridge teams competing at the highest levels of university competition. However, you could also get involved in the extensive range of sports available via inter-College competition, competing for your College team in fun, friendly and social competition. Regardless of which College you join, you'll be able to take part in any inter-collegiate sports leagues.

You can try out to represent the University – over 50 clubs compete regularly against other universities, and local and national club sides. Many University teams compete in BUCS (British Universities & Colleges Sport) competitions throughout the season, giving them the opportunity to try their talents against the best teams from universities throughout the UK. Varsity matches, played against the University of Oxford across a range of sports, are a highlight of the season.

Staying active

In over half of the sports clubs at Cambridge, you can join as a total beginner, and take on new activities when arriving at University. From martial arts, to archery, sailing, gliding, mixed lacrosse, korfbal and more!

You don't have to get involved in team sports to stay active while you're here at Cambridge. University Sport offers beginner's strength and conditioning, personal fitness programmes, and a wide range of group fitness classes.

Facilities

The University's sport facilities are based at three sites around the city. Colleges also provide facilities for some team sports and games such as tennis and rowing, and many have their own gym and sports facilities too.

Sports Centre, West Cambridge Site:

- Gym (including flexible student gym memberships and personal training)
- Strength and conditioning room
- Sports hall
- Studios
- Team training room
- Squash and fives courts
- Physiotherapy and sports injury clinic
- Group fitness classes

Wilberforce Road Sports Ground:

- Athletics facilities, including an eight-lane track and all associated field events
- Three sand-dressed hockey pitches

Fenner's Cricket and Tennis Ground:

- Cricket pitch and indoor cricket school
- Three hard and eight grass tennis courts



Financial support

Some financial support is available for students studying at the University who play competitive sport at a high level or wish to progress within coaching or officiating. For further details see the Sports Service website.

Find out more about University Sport

Visit the Sports Fair at the beginning of your first term to meet the Sports Service team and our clubs, and find out how to get involved with sport and keep active. You can also visit our website for more information about competitive and recreational sport at Cambridge.



Further information
www.sport.cam.ac.uk

Are you an elite athlete?

If you are a nationally ranked athlete, or you regularly represent your country on the international stage, you may be eligible for the University of Cambridge Athlete Performance Programme (UCAPP). UCAPP is an initiative that offers support to dual-career student-athletes from highly qualified and experienced staff, who will work with you to enhance your performance, ensuring you do not have to compromise your academic or sporting ambitions while at the University.

To find out more about UCAPP, visit www.cam.ac.uk/ucapp.

Cambridge is a TASS (Talented Athlete Scholarship Scheme) Dual Career Accredited institution, which recognises an educational institution's commitment to dual career support for talented athletes in full-time education.

In and around Cambridge

Cambridge is a vibrant city that embraces the old and the new. It combines the welcoming feel of a small town with the variety and energy of a larger city.



Getting around

Most University buildings are situated in the city centre and it's easiest to travel between them on foot or by bicycle (one of the most popular modes of transport for our students).

Well connected

Cambridge is only 60 miles/95 kilometres from London and is well connected to most of the UK from its main station located about a mile from the city centre. There are direct train connections to Stansted and Gatwick airports, and Heathrow airport is also easily accessible (via London Kings Cross/London St Pancras).



www.cam.ac.uk/traveltocam

Entertainment and comedy

However you like to spend your time, there's always something to keep you entertained. Cambridge has theatres, cinemas and entertainment venues offering varied programmes that include comedy, drama, dance, concerts and club nights.

Those who are into comedy won't be disappointed as, along with student groups, Cambridge regularly attracts top stand-up acts.

Music

Live music is a big part of life in both the city and University, from buskers and pub gigs, to classical concerts and big name acts.

The city usually hosts a number of music festivals featuring a wide variety of acts and music styles, including folk, jazz, rock, ska, UK urban and dance.

Pubs, clubs and restaurants

Cambridge has a great range of pubs, bars and cafés, from traditional pubs with open fires perfect for a winter evening to modern bars overlooking the river, ideal for a spot of people watching. The city has a mix of clubs offering everything you'd expect – a variety of music nights alongside cheap entry and offers for students.

There's a great selection of places to eat too. Something for any mood, taste, occasion, and price range. Better still, there are lots of discounts and special deals for students at various restaurants and cafés.



Shopping

Cambridge's shopping centres and the city's central streets house most high street names alongside independent shops and boutiques. The stalls in Market Square sell handmade jewellery, vintage clothes, books and much more. You can pick up baked goods and local produce as well as a range of street food.

Just on the edge of the city centre, is an eclectic mix of shops, cafés and restaurants on Mill Road, offering anything from just about anywhere in the world and to suit any budget.

Outside the city

If you want to explore further afield, Cambridge has direct rail connections to London, Brighton and Birmingham, and there's a range of local attractions in the surrounding area, including:

- Ely (historic city and Norman cathedral)
- Shepreth Wildlife Park
- Thetford Forest
- Audley End (English Heritage property)

And you don't have to go far to feel like you've escaped the city – you can walk or punt up the river to nearby Grantchester, a traditional village that has inspired songs, novels and television dramas.



Accommodation

At Cambridge, rather than choosing a hall of residence for your first year of study, you live in a College for the full duration of your course. The majority of students are guaranteed accommodation in College-owned property for three years, and many Colleges provide for fourth-year students too, so you don't have to find private accommodation during that time.¹ Your College is where you do a lot of your studying and socialising, and each College community offers pastoral and academic support.

+ Shorter contracts

Annual contracts for College accommodation are normally in the range of 27 to 39 weeks, so you don't have to pay rent for a full calendar year, and you won't be charged for some vacations unless you choose to stay in Cambridge.

+ Not far to travel

Accommodation is close to the city centre and within walking or cycling distance of departments.

Where is the accommodation?

Some Colleges have all their accommodation on their main site. Others have some on their main site plus a range of College-owned flats/houses around the city – check the table on p120-1 for details. All College accommodation is within the University precincts, an area covering a three-mile radius around Great St Mary's Church, which is next to the Market Square in the heart of the city.

During term time, students are required to live in this area unless given permission to live elsewhere by their College. All students should be available to study in Cambridge for the full duration of their course (with the exception of a year abroad should that form part of your course). Most accommodation is within easy walking or cycling distance of the University departments and facilities, and the city centre. See the map on p158-9 for locations.

What's the accommodation like?

There's a variety of accommodation available – rooms vary from medieval to modern. Whatever the style, you have a room of your own and access to a shared kitchen and laundry room. Many Colleges offer accessible rooms for students who need them – further information about accessibility is available on p29. All Colleges provide a library and computer suite too, amongst a range of other facilities (see p120-1).

Somewhere to relax

The main social hub of every College is its common room and/or bar (also known as a JCR, or Junior Common/Combination Room), usually offering TVs, newspapers, pool tables, or computer games.

Colleges have a wide range of sports and music facilities too – such as playing fields, gyms, music practice rooms and performance venues. See p19-21 for more information about music and sport at the University.

Somewhere to eat

At Cambridge, you don't have to choose between 'catered' or 'self-catered' accommodation. Basic self-catering facilities are available if you want to cook for yourself, and all Colleges provide dining facilities where you can buy cafeteria-style meals as well as three-course dinners (known as 'formal halls') at a reasonable price (see p33).

The Colleges encourage communal dining; it's a chance to catch up with friends and meet new people. Some Colleges require you to have a certain number of meals in the buttery (College cafeteria) or dining hall each term (see College websites for details).

Porters

Every College has a team of Porters to maintain the safety and security of staff and students. One of the linchpins of College life, the Porters are often a first point of contact about any problems in College or if you need any information.

How much does it cost?

The cost varies from College to College, and usually depends on the type and style of your room (size, en suite etc) but the cost generally covers utilities (water, electricity, heating), cleaning, internet access and basic self-catering facilities. Some Colleges may charge a deposit in addition to your rent or charge separately for some utilities. Please check individual College websites for details.

You can find more information about accommodation costs, living costs, tuition fees and financial support on p32-5.



Further information

www.cam.ac.uk/accommodation



¹Accommodation guarantee applies to single undergraduates without children at all Colleges. All single undergraduates without children are usually expected to live in College-owned accommodation where possible.

Support

The transition to university study and living away from home can be a big change for many of our students. If you need a bit of extra support while at the University, whether that's with your academic work or personal issues, we have an extensive welfare system in place.

There are various University services and within your College community you have a number of people looking out for your academic and personal welfare and supporting you throughout your time at Cambridge. Students who are struggling with a particular problem or feeling a bit lost won't go unnoticed.

+ 99%

of students continue or complete their degree at the University, compared to 92 per cent nationally.¹



Student support

Our student support pages provide information on a variety of support and wellbeing services. Students can access counselling, mental health advice, sexual harassment and violence support and services for students with disabilities or long-term health conditions.

Visit www.studentsupport.cam.ac.uk for more information.



College welfare

Director of Studies

Your Director of Studies (DoS) is an expert in your subject and usually a Fellow of your College (a senior member of the College whose main duty is teaching, administration or research). Appointed to look after your academic welfare, they:

- advise you on your subject and course choices
- help arrange your supervisions
- monitor your progress and help with any problems arising from your studies

They're also involved in the admissions process and they usually conduct interviews.

Tutor

As well as a DoS, you have access to a College Tutor, who's also an academic but normally in a different subject from yours. They're there to protect your interests and provide pastoral support, and can advise you on any personal or financial matters.

College staff

Colleges have a variety of people you can turn to for medical or personal support (or just a cup of tea and a chat), such as a nurse, counsellor, and/or chaplain.

Students supporting students

Throughout the University and Colleges, there's an extensive student-run welfare network. Every College common room has its own welfare officer or team that can provide support and advice to students. Many Colleges also assign 'College families' to new students to help them settle in.

As every student is a member of the SU, Cambridge SU seeks to represent them all effectively. The Cambridge SU Campaigns also provide specific communities for students with shared backgrounds and interests. Many of the Campaigns have 'buddy' schemes, similar to College families.

In addition to this, most clubs, societies and College students' unions have elected committees to support their members' welfare as well as provide great opportunities for socialising, having fun and learning new skills.

Student Advice Service

The Student Advice Service provides free, confidential and impartial advice to students by phone, email or video call. Working independently of the Colleges and University, the Advice Service offers help to undergraduate and postgraduate students across a range of areas, from making friends to working relationships, exams to intermission, and welfare concerns to finance.



www.cambridgesu.co.uk/support/advice



Mental health and wellbeing

Life at university can bring a range of experiences, changes and new opportunities. If you find yourself feeling overwhelmed, unsure, worried, or struggling with a mental health difficulty, you are not alone. You can find more information about mental health and wellbeing support at your College, the University, and locally in Cambridge, on the student support website.

www.studentsupport.cam.ac.uk/mental-health-and-wellbeing

Counselling

The University's Counselling Service offers a free and confidential service to all students at the University. Professional counsellors, mental health advisers and the University Sexual Assault and Harassment Adviser are available to talk through any personal or emotional concerns that you might have during your time at the University. More information, as well as a wide range of self-help resources and access to workshops, is available from the Service's website (www.counselling.cam.ac.uk).

Student parents and childcare

The University's Childcare Office operates the Information Service that provides comprehensive guidance on family-related matters such as childcare, schooling, healthcare, financial support and local community resources. The Childcare Office also oversees the facilities and assistance available to student parents, including the West Cambridge and Eddington Nurseries, and the Holiday Playscheme.

Some Colleges can provide family accommodation (see the individual College websites). Where this isn't available, please refer to the central Accommodation Service (www.accommodation.cam.ac.uk).

Further information

Childcare Office



01223 332249



childcare@admin.cam.ac.uk



www.childcare.admin.cam.ac.uk

Disabled students

The Accessibility & Disability Resource Centre (ADRC) offers guidance, information and support, and is an essential contact for disabled applicants, including those with a specific learning difficulty, mental health conditions, or long-term health conditions.

The ADRC supports applicants, offer holders and students with disabilities including:

- specific learning difficulties (including dyslexia and dyspraxia)
- physical/mobility impairments (including people with upper limb disorder/WRULD)
- sensory impairments (eg hearing, Deaf, visual)
- mental health difficulties (eg depression, anxiety disorder)
- long-term health conditions (eg cancer, chronic fatigue syndrome, HIV, diabetes, epilepsy, long Covid)
- Asperger syndrome, autism and ADHD

If you're considering Cambridge, you're advised to get in touch with the ADRC and a College admissions office as early as possible to discuss your application and specific requirements. We strongly recommend that you indicate your disability and provide any relevant information in your

UCAS application. Such disclosures are looked at separately from academic assessment and allow us, for example, to make appropriate adjustments to the interview process, if needed. If a particular College meets your specific requirements, we recommend you apply to that College rather than make an open application (see p119).

Location and accessibility

Students are based in Colleges for day-to-day living and go to a faculty/department for lectures, practical work etc. Therefore, we encourage you to visit before applying to assess the suitability of your intended College and department, including their locations relative to each other.

The ADRC's online Building Access Guide is a useful starting point for information regarding facilities and accessibility (www.disability.admin.cam.ac.uk/building-access-guide). All main University sites and the majority of Colleges have AccessAble guides (www.accessable.co.uk/university-of-cambridge).



You can find more details about the support available when you arrive at the University and throughout your time as a student in our settling in video.



Watch the video:
www.cam.ac.uk/support



Academic-related disability support

With your agreement, the ADRC liaises with relevant University and College staff before you start to ensure that appropriate support requirements are established.

If you require support workers such as note-takers, specialist one-to-one study skills tutors or mentors, the ADRC's Non-Medical Help (NMH) Scheme may be able to help (www.disability.admin.cam.ac.uk/students/current-students/advice-and-guidance/human-support).

Other support may also be available through Disabled Students' Allowances (DSAs). Visit www.gov.uk/disabled-students-allowances-dsas for more information.

Examination access arrangements

If you require specific arrangements for examinations (such as additional time, someone to write on your behalf and/or use of a computer), the ADRC can advise how to organise such arrangements via your College Tutorial Office. Please note that arrangements, and evidence required, at university may differ from those at your school/college.

Specific learning difficulties (SpLDs) including dyslexia and dyspraxia

If you have an SpLD you must have a current diagnostic assessment report as evidence for obtaining appropriate adjustments. Information about diagnostic assessments is available from the ADRC's Neurodiversity Team and on the ADRC website.

Financial support

Currently, UK students can apply for Disabled Students' Allowances (DSAs) to cover some of their support costs. It's important that you begin the application process for DSAs as soon as possible to ensure any available support is in place for the start of term. In addition, there are specific University funds that disabled students from the UK, EU and overseas may apply for (see the ADRC website for details). The ADRC can advise offer holders on appropriate funding applications.

Further information

Accessibility & Disability Resource Centre

01223 332301

disability@admin.cam.ac.uk

www.disability.admin.cam.ac.uk/students/prospective-students

Alternative formats

The information in this publication can be found on our website at: www.undergraduate.study.cam.ac.uk.

However, if you'd like some information in an alternative format (eg large print) please contact the Cambridge Admissions Office to discuss your requirements.

Cambridge Admissions Office

01223 333308

admissions@cam.ac.uk



Care-experienced students

Further support is available for care-experienced students at the University, including a guarantee of 365-day accommodation, if required. Care-experienced students could also receive enhanced financial support, such as a higher level of the Cambridge Bursary (see p34).

In order to ensure you get the support available to you as a care-experienced student, you should indicate in your UCAS application that you've spent time in care.

If you are or have been in care or you're supporting a young person currently or previously in care and would like to find out more about visiting or studying at the University, please see the website or contact the Widening Participation Team. Students can also contact the team when they arrive in Cambridge to find out more about the support available.

Further information

Widening Participation Team

realise@admin.cam.ac.uk

www.cam.ac.uk/careleavers

Estranged students

There is also support available for students studying at the University who are estranged from their families. This includes 365-day accommodation and estranged students can also receive enhanced financial support, such as a higher level of the Cambridge Bursary (see p34).

If you are an estranged student and would like to find out more about visiting or studying at the University, please see the website or contact the Widening Participation Team. Students can also contact the team when they arrive in Cambridge to find out more about the support available.

Widening Participation Team

realise@admin.cam.ac.uk

www.cam.ac.uk/estranged-students

Refugee students

Refugees, asylum seekers or anyone from a forced migration background may have specific concerns when considering or starting university, and it's important to us that you feel supported during this time. We recognise that you may have experienced barriers and difficulties that can have a significant impact on educational opportunities and outcomes, which can be declared through the Extenuating Circumstances form (see p11). More information about applying with international qualifications can be found on p153-4 or at www.cam.ac.uk/entrancerequirements. You can also get in touch with any College admissions office for further advice.



www.cam.ac.uk/refugees

Young carers

At the University, we offer a wide range of support for all of our students, including those with caring responsibilities. If you care for a family member or friend, whether that's due to illness, disability, a mental health condition or addiction, you can access help and advice both before you apply to the University and once you join us as a student.

If you have ongoing caring responsibilities, it's important that you find out more about living at the University before you decide whether to make an application. We do have a residency requirement – during term time, students are expected to live in College accommodation, unless they've been given permission to live elsewhere in Cambridge. You can discuss your particular situation with any College admissions office before applying.



www.cam.ac.uk/young-carers





Money

Going to university is an investment in your future. Whichever university you apply to, you need to consider the cost of your tuition and your living (or 'maintenance') costs. These amounts can seem daunting but there's lots of support available to help you finance your studies.

+ Cost effective

The University's plentiful resources include specialist computer rooms and more than 100 libraries which can help to keep your study costs low.

Tuition fees

The University is committed to providing a world class education and access to the very best teachers, resources and support. Therefore, we invest significantly more than the government regulated tuition fee on each student every year to ensure you get the most from your Cambridge education.

The tuition fee for Home fee status students starting their first undergraduate degree in 2023 will be £9,250 for the year.¹ Details of the fee for 2024 entry will be published on the Undergraduate Study website as soon as they are available; see: www.cam.ac.uk/ugtuitionfees.

You should check the website for the most up-to-date information on tuition fees before applying and prior to accepting an offer from the University should your application be successful.

Currently, Home students can take out a government loan for their tuition fees. At the moment, students can defer payment of the loan until after they've left university and are earning a minimum salary, at which point the loan is repaid in instalments. Refer to the appropriate student finance award agency for details of tuition fee support (p35).

International students can find out more about tuition fees on our website: www.cam.ac.uk/uginternationalfees.

Fee status

If you're unsure whether you're classed as Home or international/overseas for fee purposes, you can find more information at: www.undergraduate.study.cam.ac.uk/international/fee-status.

¹ Students studying for a second undergraduate degree or taking a year abroad should refer to the website for information regarding fees (www.cam.ac.uk/ugtuitionfees).



+ Extensive support

The University and Colleges offer a range of financial support. See p34-5 for more details.

Cost-effective living

'Living costs' cover whatever you need to pay for, excluding tuition fees, while you're at university. For example, accommodation, food, course costs/study materials, personal expenses and transport.

Please visit the website for more details about estimated living costs for 2023-24.



Further information
www.cam.ac.uk/uglivingcosts

Living Costs 2022-23

Accommodation	£130-£200 per week ² £150-£210 en suite, per week ²
College meals	£4-£7 per meal
Additional course costs	Dependent on course (see right)
Transport in Cambridge	Cheap or free!

You should allow for increases in subsequent years. The weekly accommodation cost may vary both within a particular College and across the 29 undergraduate Colleges.

Accommodation

Most Colleges offer a range of accommodation to suit your preference and affordability. The table below details the median weekly rent across our 29 undergraduate Colleges. The weekly rent and the length of your accommodation contract will vary depending on your College choice – minimum contract lengths in 2022-23 range from 27 to 39 weeks. Please see individual College websites for details about accommodation costs, contract lengths and additional charges.

Food

Colleges provide basic self-catering facilities as well as cafeterias/dining halls (see also p25). Some levy a separate charge towards the running costs of the College kitchens – a Kitchen Fixed Charge which ranges from £258 to £625 per year in those Colleges that make such a charge. Some Colleges also have a minimum meal charge, which is paid in advance and provides credit for meals bought in College. Please see individual College websites for details.

- Individual meals typically cost £4-£7
- Many Colleges have regular 'formal halls' (three-course dinners) that are also great value, typically at around £10-£16 at most Colleges.

Additional course costs

These costs are in addition to tuition fees and living costs and will vary depending on your course but may include you having to pay for your own:

- personally owned equipment (eg calculator, lab coat)
- printing
- study materials (eg paper, pens, books)
- travel costs (eg field or dissertation research trips)

The University's numerous libraries and IT facilities (see p14-5) help to keep your costs down and many Colleges and some departments offer grants to help with particular costs.

You can find specific details of additional course costs on our website (www.cam.ac.uk/courses).

Personal expenses

What you spend on food, clothing, transport etc depends on your lifestyle. However, there are lots of free recreational facilities plus loads of College-based and student-run activities that don't cost very much. What's more, Cambridge is a small place so transport in the city is cheap or free: most students walk or cycle and there's a 'Universal' bus service that offers discounted fares to students.

² Figures based on the median room costs for first year undergraduate students in 2022-23. Students should allow for price increases in subsequent years of study. A choice of shared bathroom and en suite rooms is not available at all Colleges and figures do not include any deposits that may apply. Costs have been rounded up to the nearest £10. Please see individual College websites for further details.



Financial support

You now have a reasonable idea of the costs involved for Home fee status students studying at Cambridge, but what about financial support? Well, there's currently a range of help available, including:

- government student loans for tuition fees and living costs
- the Cambridge Bursary Scheme
- College awards

Some support is currently available to all eligible Home fee status students. Eligibility for other government and University funding usually depends on your financial circumstances. You should refer to the appropriate finance award agency website for the most up-to-date information and guidance (see opposite). For more information about the financial support Cambridge offers to eligible students, please refer to our website for details and the latest figures (www.cam.ac.uk/studentfinance).

For more information about tuition fees and the financial support available for international students, see p40.

Cambridge Bursaries

The Cambridge Bursary Scheme offers Home fee status students studying for their first undergraduate degree non-repayable bursaries to help with living costs. These are offered in addition to any government financial support.

The value of each bursary is dependent on household income and other indicators of disadvantage.

The amount you are eligible for is tapered, so that those with a lower household income receive more. You're automatically considered for a Cambridge Bursary if you're financially assessed by your student finance authority, so you don't need to apply separately.

Additional awards are available to all students who are classed as independent by their regional funding body or who were eligible for free school meals (or equivalent status for mature students).

Visit our website for more information about the Cambridge Bursary.



Further information

www.cambridgestudents.cam.ac.uk/cambridgebursary

College awards

Additional sources of funding may be available from your College, such as:

- book and equipment grants to help with specific study-related costs
- scholarships and prizes for academic or other achievements
- travel grants for academic work and personal enrichment
- grants and loans to help deal with unforeseen financial difficulties
- supplementary bursaries for living costs/maintenance

Information on any such funds is available from each College (www.cam.ac.uk/collegeawards).

Outreach scholarships

We offer a range of scholarships in support of our outreach work to build a more inclusive student community. These scholarships offer financial support to UK students from underrepresented groups. Some of these scholarships are available for students studying specific subjects. For more information, visit www.cam.ac.uk/outreach-scholarship.

Part-time work

During your time at Cambridge, you're expected to spend an average of 42-46 hours a week on your academic studies each term, and it's important that you have leisure time outside of your studies. Therefore, it's not advised for students to undertake paid employment during term time. We offer a range of financial support to help you manage the costs of university study (see opposite). However, there may be a few opportunities available within the University and Colleges that are exceptions to this, such as working in the College bar, College library or as a student helper during open days.



Student Finance



To find out more and watch our helpful video guide, visit www.cam.ac.uk/studentfinance

Student finance award agencies

Government financial support arrangements can vary according to where you're from in the UK. Please refer to the relevant organisation for the most up-to-date details and guidance.

Information about government financial support is correct at the time of printing but is subject to change and/or government approval.

Student Finance England and Non UK Team



www.gov.uk/studentfinance

Student Finance NI



www.studentfinancenirni.co.uk

Student Awards Agency Scotland (SAAS)



www.saas.gov.uk

Student Finance Wales



www.studentfinancewales.co.uk

Please note that you're strongly advised to apply for financial support as early as possible. Applications for government support will open early in 2024 and you don't need a confirmed place at a university to apply for this.



Careers

Whether you're sure of the career you want to pursue when you graduate or you're looking to explore your options, we'll help you to prepare for your future.

Transferable skills

The majority of graduate employers recruit students with any degree discipline. It's the flexibility of your degree, as well as the range of transferable skills that you develop, that are of interest to employers.

Cambridge students are typically ambitious, intelligent, motivated, hard-working, passionate, committed, curious, intellectually creative, independent thinkers, and able to manage their time effectively. Employers know this and look for the same attributes in potential new employees, which is why our graduates are so sought after.

Dedicated support and guidance

Once you're at Cambridge, you can work with our dedicated Careers Service from day one to explore your career options. The team of experienced and impartial careers advisers can help you connect with employers and navigate the complex job market, saving you time and maximising your employability prospects. The Careers Service run a range of workshops on topics including choosing a career, cover letters, applications and getting ready for interviews. They also organise more than 200 careers events and briefing and skills sessions, and typically around 15 major careers fairs each year.



Monica
History graduate

Monica graduated with a History degree in 2018 and the transferable skills she gained have allowed her to take an unconventional career journey. After graduation, Monica took some time to consider her options, travelling the world for eight months as cabin crew at British Airways. She is currently working at PwC after successfully completing their Management Consulting Graduate Scheme.

"For upcoming graduates who may be stressed about deciding upon a career, I would advise taking your time until the right opportunity for you opens up. The Careers Service can be really helpful in connecting you to alumni. But don't fret if you don't have a clear idea of your career goals in your final year; sometimes it's best to dip your toe in a few areas first as you might surprise yourself and fall in love with a vocation that you wouldn't have expected!"

Read more about our graduates' career destinations on the Careers Service website: unicamcareers.edublogs.org



Further information
www.careers.cam.ac.uk

+ 92%

of our students who responded to the Graduate Outcomes Survey were in work or further study within 15 months of graduating.¹

Networking opportunities

The Careers Service's alumni and mentoring system, Alumni Careers Connect, will give you access to contact details for over 1,200 Cambridge alumni working in a huge range of industries who can offer first-hand advice. The Service also runs more than 50 employment-related skills training sessions and can offer information on occupations, further study courses and funding.

Graduate employment destinations

Our graduates go on to work in a wide range of industries, from social work and education to legal activities and finance. The list below shows the top ten occupations of respondents to the Graduate Outcomes survey (15 months after graduation).¹

- 1 Management consultants and business analysts
- 2 Secondary education teaching professionals
- 3 Medical practitioner
- 4 University researchers
- 5 Programmer/software development professional
- 6 Finance and investment analysts and advisers
- 7 Higher education teaching professionals
- 8 Business and related associate professionals
- 9 Primary and nursery teaching professionals
- 10 Marketing associate professionals



Further information

www.information-hub.admin.cam.ac.uk/university-profile/graduate-outcomes

Further study

Our degrees don't just prepare you for employment – usually, more than a quarter of our graduates each year progress into further study or training.¹ We offer world-leading graduate education, with over 300 graduate courses spanning 21 types of qualification. Visit www.postgraduate.study.cam.ac.uk for more details.

¹ Based on responses to the Graduate Outcomes survey. This records the outcomes of students who completed their studies between August 2019 and July 2020. 55 per cent of graduates responded to the survey.

+ Top 5

in the UK for graduate prospects (*Complete University Guide 2023*).

Internships and work experience

Our industry connections provide a range of opportunities for you to undertake work experience, enhancing your CV ready for graduation. Thousands of opportunities are publicised across all sectors on the Careers Service's Handshake site, with bursaries offered to support unpaid opportunities with charities.



Zain

Mathematics graduate

Zain spent the summer between the second and third years of his Mathematics degree interning as a data scientist at Satavia, an up and coming aviation tech company. Zain graduated in 2019 and is now using his experience in his current role as a Software Engineer at QuantumBlack.

"Working at a start-up appealed to me as I was guaranteed to be working in an energetic environment where I would have the opportunity to take responsibility and have a far-ranging impact on the company. It also meant that I'd have a chance to work on a broad range of areas.

The internship was everything I expected and more. I had the chance to make core business decisions and was able to see and work on almost every part of the company. The experience really solidified the idea that I wanted to work in the tech industry when I graduated."

Find out about internships and placements on the Careers Service website: www.careers.cam.ac.uk



Mature Students

If you'll be aged 21 or over by 1 October in the year in which you hope to come to Cambridge, you'll be applying as a mature student. We have almost 600 mature undergraduates studying for their first degree at Cambridge, many of whom are in their 20s.

Colleges

Mature students can apply to any of the undergraduate Colleges, though most choose one of the three Colleges that are exclusively for students aged 21 or over – Hughes Hall, St Edmund's College or Wolfson College. Mature students who make an open application (see p119) are allocated to one of these Colleges.

Supporting mature students

The support detailed on p26-31 extends to mature students, and we're committed to making sure you feel part of your College community.

Mature students are also eligible for a range of financial support, and may be eligible for a higher level of Cambridge Bursary.

Entrance requirements

The nature and demands of Cambridge courses mean they require academic preparation, and mature students must be of an equivalent academic standard to school leavers. Therefore, you're expected to demonstrate evidence of recent academic achievement at a high level, for example in one or more A Levels, an Access to HE Diploma, Certificate of Higher Education, or an Open University course.

Many of our courses require specific academic preparation. Please read the information on Access to HE Diplomas on p154 carefully, and contact one of the mature-student Colleges for advice.



Further information
www.cam.ac.uk/mature



UCAS Information
www.ucas.com/maturestudents



Applying

Mature students apply in the same way as school leavers (see p4-11). Please also note:

- after you've submitted your UCAS application, you will need to fill in an additional Cambridge-specific application form (My Cambridge Application) which we'll send you a link to by email (see www.cam.ac.uk/apply for more details)
- those applying for the Graduate Course in Medicine need to complete a course-specific application form as well as the UCAS application (see p95)
- applicants to Chemical Engineering and Biotechnology, Computer Science, Engineering, Law, Medicine, Natural Sciences, and Veterinary Medicine are required to take the relevant pre-registration written assessments
- mature applicants to standard age Colleges applying for Economics will need to take the TMUA assessment. Those applying to one of the three mature-student Colleges can either choose to take this assessment or will be set an equivalent test if invited to interview.

Application deadlines

The standard deadline for applications to be received is **16 October**. However, the three mature-student Colleges consider applications from mature students and for second undergraduate degrees in some subjects as part of a second application round, the deadline for which is **1 March 2024**.

Those considering applying in the second application round (or for entry in future years) should consult the mature-student Colleges' admissions offices for advice.

Application deadlines for mature applicants

16 October 2023

- Mature students applying for any subject to a standard-age College or in the first application round to one of the mature-student Colleges.
- Mature students making an open application.

1 March 2024

- Mature students applying to Hughes Hall, St Edmund's College or Wolfson College¹ to study any subject except Architecture, Chemical Engineering and Biotechnology, Computer Science, Engineering, History of Art, Medicine, Graduate Course in Medicine, Music, Natural Sciences, Philosophy, Veterinary Medicine.

Second undergraduate degrees

If you're a graduate with a first or 2.1 Honours (or equivalent) in an approved undergraduate degree from another university, you can apply to take a second undergraduate degree at Cambridge.

Applicants for a second undergraduate degree may apply for the full course or as an affiliate student. Affiliate students take the Cambridge course in a year less than usual. Where possible, affiliate applicants are encouraged to apply by the 16 October deadline.

Please note that there are some restrictions:

- affiliate students can't make an open application or apply for Architecture, History and Modern Languages or History and Politics
- some Colleges may not accept affiliate applications for other courses (see College websites for details)
- only Lucy Cavendish, St Edmund's and Wolfson Colleges consider affiliate applications for Medicine and Veterinary Medicine

Tuition fees for Home fee status students taking a second undergraduate degree (regardless of whether they are taking the affiliate or full course) may be different to the standard Home fee – see online for details (www.cam.ac.uk/ugtuitionfees). International students should visit www.cam.ac.uk/uginternationalfees.

Students studying for a second degree normally have to pay a separate College fee as well (see p41; this doesn't usually apply for Architecture, Medicine and Veterinary Medicine).

You should allow for annual increases to tuition fees, and note that there's very little financial support available. Annual increases will be determined by various factors (eg cost of delivering educational and related student services, changes in government and other funding), and will usually be in line with the prevailing UK rate of inflation.



Further information
www.cam.ac.uk/mature

¹ Please note that for Law, applications to Wolfson College must be submitted by the 16 October deadline.

International Students

Around 25 per cent of our undergraduates (approximately 3,200 students) are from outside the UK, representing nearly 100 countries.

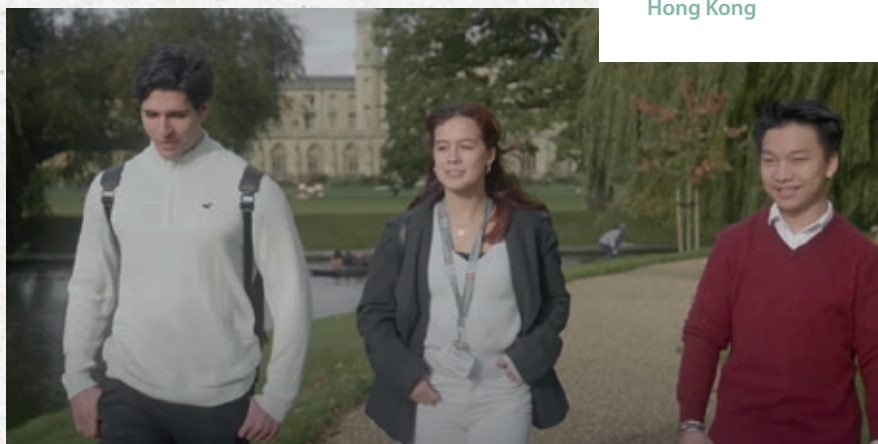


A global community

Cambridge has a diverse and vibrant community, making it a great place to be a student. As well as having access to the vast range of societies on offer to all Cambridge students (p16-21), there are also a number of events and societies specifically for international students. So, if you want to meet and socialise with other students from overseas, there are plenty of ways for you to do so! For more details see the Undergraduate Study website and the international student pages on the Cambridge SU website (www.cambridgesu.co.uk).

"Cambridge has certainly lived up to my expectations, but seeing it in brochures versus living here is very different. I really enjoy being around the historical atmosphere and architecture – which I didn't really expect! While there's academic prestige to consider, there're also lots of other things to do – I've found lots of stuff to get involved in!"

Cheryl
Hong Kong



Watch our journey to Cambridge video:
www.cam.ac.uk/uginternational



Help and support

There are plenty of people around the University who can offer help and support while you are in Cambridge (see p26-31). Our Language Centre can also help you develop your academic communication and language proficiencies through the ADTIS In-Sessional Programme. You can find out more at www.langcen.cam.ac.uk/adtis/in-sessional.

University of Cambridge Summer Programme

The University's Summer Programmes have brought people together across all ages and backgrounds for 100 years: the first vacation programme was in 1923! We offer short courses in a wide variety of subjects and delivered at undergraduate level. You can join us for our residential face-to-face programme. Find out more and register your interest at www.ice.cam.ac.uk/summer.

Fees and funding

Costs

International student costs at Cambridge include tuition fees, separate College fees and living costs. Visa applications require you to prove in advance that you can finance all these costs. Colleges also ask for financial guarantees. The University takes the view that students should not undertake paid employment during the academic session, as it's important that you have an appropriate work-life balance.

- **Tuition fees:** the international/overseas fee rate which varies by course. The tuition fee for international students is fixed for the duration of their course. Fees for new entrants will be subject to annual review and are usually higher than those for continuing students. For information on tuition fees for 2024 entry, please see the website where fee details will be published as soon as they are available: www.cam.ac.uk/uginternationalfees.
- **College fees:** all international/overseas fee status students, and those Home fee status students who aren't eligible for tuition fee support, normally have to pay an annual College fee in addition to University tuition fees (www.cam.ac.uk/ugcollegefees). Net College fees in 2023-24 range between £8,750 and £11,750. See individual College websites for fees for 2024-25 onwards.
- **Living costs:** your living expenses may be higher than for a UK student (eg if you stay in Cambridge/the UK during vacations). For more details about living costs visit www.internationalstudents.cam.ac.uk/arriving.

Financial Support

The financial support available for international undergraduates is limited but at Cambridge this includes Cambridge Commonwealth, European and International Trust awards; College awards; and country-specific scholarships. Few full undergraduate scholarships are available – most support is a partial contribution and is means-tested. Details about these funding sources are available from: www.cam.ac.uk/uginternationalsupport.

Applying to Cambridge

All applicants must complete a UCAS application and an additional form online by the relevant deadlines (see www.cam.ac.uk/apply). Please check the website for details.

You can find information about country-specific entry requirements, English language requirements, interview details and the application deadlines for 2024 entry on our website: www.cam.ac.uk/apply.

Visas and immigration

The University's International Student Office provides a visa advice service to assist students in applying for a student visa. The primary source of information on all matters concerning immigration is the Home Office.

It's your responsibility to ensure that you understand and fulfil the immigration requirements for your student visa application and comply with the conditions of your visa during your studies.

Further information

International Student Office



www.internationalstudents.cam.ac.uk

Home Office



www.gov.uk/student-visa

Visit our website for help and advice specific to the country you are applying from.



www.undergraduate.study.cam.ac.uk

Unibuddy

Scan the QR code to chat with current students from across the world:

