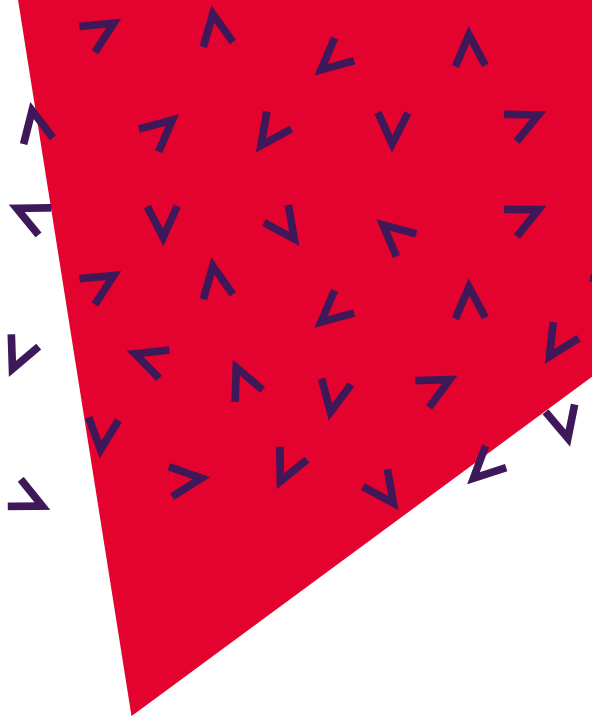




UNIVERSITY OF
CAMBRIDGE



**Apply:
Cambridge**

What is Apply: Cambridge?

Apply: Cambridge is a specialist and free programme designed to support highly able students from underrepresented backgrounds and areas to make successful applications to the University of Cambridge.

Officially affiliated with the University of Cambridge, the programme will be delivered by Cambridge staff and admissions tutors who will be sharing their expertise on the application process.

We will work with you every step of the way over a 6-month period, helping you navigate the process and effectively prepare for your Cambridge application.

The programme will be delivered entirely online and will run from w/c 25th July 2022 until the end of January 2023.



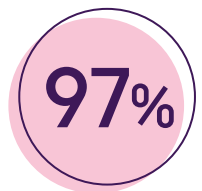
"Apply: Cambridge is a great programme, it gave me confidence in my application. I don't know of any other resource that was as supportive."

What do you have access to on the programme?

- Information webinars
- Interactive workshops
- Guided learning opportunities
- Q&A sessions with Admissions Tutors and current students
- Mentoring from a current student at the University of Cambridge

Why might you want to take part?

Participants in 2020 were **significantly more likely** than other Cambridge applicants to receive an offer from the University. For example, participants in receipt of Free School Meals were 1.6x more likely to receive an offer than those who did not receive our support.



97% of participants said they would recommend participating in the programme to other prospective Cambridge applicants.

Who can apply?

To be eligible to apply, you must:

- Be eligible for UK home fee status
- Be a student at a state school or college in the UK
- Be intending to make an application to Cambridge in October 2022
- Be studying for qualifications at your school/college that meet the entry requirements for your chosen course at Cambridge
- Be on track to achieve **at least** the **minimum grades** required for entry. A*A*A for most sciences courses (excluding Veterinary Medicine which has an entry requirement of A*AA) and A*AA for arts & social sciences courses (excluding Economics which has an entry requirement of A*A*A). [See here for more details.](#)
- Be committed to undertaking the necessary work attached to participation in the programme, places on the programme are competitive and we expect students chosen to be engaged with all aspects of the programme



It may not be possible to offer every applicant a place on the programme but we would encourage ALL students meeting the eligibility criteria outlined above to apply.

||

"Without the support of the programme I would have struggled to submit an application to the University of Cambridge. Securing a place on the programme helped me to show my teachers that I was committed and ambitious."

Priority criteria

Where spaces are limited, students who meet one or more of the following criteria will be prioritised. The criteria below are organised in order of their priority i.e. being care experienced is of the highest priority.

- Students who are care experienced
- Students who are eligible for the 16-19 Bursary/Pupil Premium and/or those who have been in receipt of Free School Meals at any point in the last six years

Students who come from an under-represented ethnic group

- Black African and Black Caribbean
- Pakistani and Bangladeshi
- Gypsy, Roma and Traveller
- White Students from Lower Socio-Economic Backgrounds (ever6 FSM)

Students who have experienced disruption to their education such as for the following reasons:

- Medical/health issues (including mental health), particularly those that have resulted in long or extended periods of absence (over eight weeks) from school in the last six years
- Bereavement of a close family member (e.g. parent/carer) in the last six years
- Being a young carer, defined as being the primary carer for a parent or sibling
- Becoming a parent
- Being an asylum seeker or refugee
- Becoming estranged from both primary carers (e.g. parents/carers)
- Moving schools more than once in the last six years (includes military children)
- Other disruption (to be specified)

- Students from schools with historic low progression to Oxbridge
- Students who live in POLAR4 Quintiles 1&2 or IMD Quintiles 1&2 target wards
- Students who are members of a HE+ or Insight+ school
- Students who have been participants on other programmes offered by the central Cambridge Admissions Office



"Thanks for this opportunity, the programme has been extremely useful in helping me to get through the admissions process and prepare myself for the interviews."

Please note:
Educational disruption due to COVID-19 is NOT regarded as a marker of disrupted education.

How can you apply?

If you would like to be considered for the programme, you will need to complete and submit the short application form by **9am on Monday 13 June 2022**



[See here for application form.](#)

Please note:

Along with some basic personal details, the form asks you to provide an idea of the Cambridge course you are considering applying to and your past and predicted grades. It may be helpful to have this information to hand when completing the form.

You will also need to provide an email address for a staff member at your school/college so please ensure you have verified their details and consult them where necessary (particularly in regard to predicted grades).

We will then email a copy of your application to them in order to verify that the information you have provided is correct, please therefore ensure all the information is accurate upon submission.

What is the application timeline?

| | |
|-----------------------------------|---|
| Monday 16 May 2022 | Applications Open |
| Monday 13 June 2022 at 9am | Applications Close |
| Monday 20 June 2022 at 9am | Deadline for teachers to confirm academic eligibility of applicants |
| Friday 1 July 2022 | Selection decisions communicated to all applicants |
| Monday 11 July 2022 at 9am | Deadline for applicants to accept their offer of a place |
| w/c 18 July 2022 | Final confirmations circulated to all participants |
| w/c 25 July 2022 | Programme begins |

Please note: Participation or non-participation with this programme is completely separate from the admissions process and will not be taken in to account in any university application.



Further Questions

If you have any questions or if you would like to discuss anything further before submitting an application then please email the team on **applycambridge@admin.cam.ac.uk** and write your full name in the subject line.



UNIVERSITY OF
CAMBRIDGE



Apply:
Cambridge